



# ISLAND BREEZE



## ISLAND BREEZE Model number: 30ISL28563AH19

**3 beds • 2 baths • 1568 sq.ft. • 28' width • 56' depth**

Our home building facilities invest in continuous product and process improvements. Plans, dimensions, features, materials, specifications and availability are subject to change without notice or obligation. Renderings and floor plans are representative likenesses of our homes and may differ from the actual homes. We invite you to tour a Home Center near you and inspect the highest value in quality housing available or call (912) 225-6940 to speak with a Home Consultant. Copyright 2017, CMH. All rights reserved.

<https://www.claytonhomesofstatesboro.com>

## CLAYTON HOMES- STATESBORO

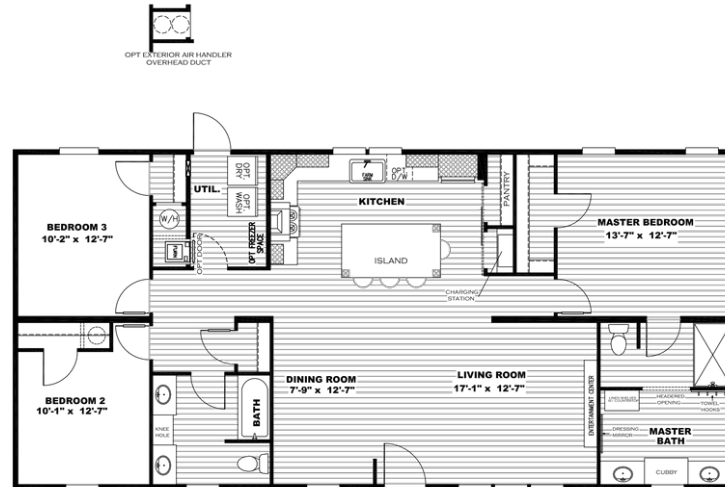
12147 HWY 301 SOUTH  
STATESBORO, GA 30458

Monday - Thursday: 9am to 6pm  
Friday: 9am to 6pm  
Saturday: 9am to 5pm  
Sunday: Closed

(912) 225-6940



# ISLAND BREEZE



MODEL #SSP28563IH  
DRAWING # 30-11M026  
**28' x 56' ISLAND BREEZE**

**ISLAND BREEZE** Model number: 30ISL28563AH19

**3 beds • 2 baths • 1568 sq.ft. • 28' width • 56' depth**

Our home building facilities invest in continuous product and process improvements. Plans, dimensions, features, materials, specifications and availability are subject to change without notice or obligation. Renderings and floor plans are representative likenesses of our homes and may differ from the actual homes. We invite you to tour a Home Center near you and inspect the highest value in quality housing available or call (912) 225-6940 to speak with a Home Consultant. Copyright 2017, CMH. All rights reserved.

<https://www.claytonhomesofstatesboro.com>

## CLAYTON HOMES- STATESBORO

12147 HWY 301 SOUTH  
STATESBORO, GA 30458

Monday - Thursday: 9am to 6pm  
Friday: 9am to 6pm  
Saturday: 9am to 5pm  
Sunday: Closed

(912) 225-6940