



42TRR14663AH19



42TRR14663AH19 Model number: 42TRR14663AH19

3 beds • 2 baths • 924 sq.ft. • 14' width • 66' depth

Our home building facilities invest in continuous product and process improvements. Plans, dimensions, features, materials, specifications and availability are subject to change without notice or obligation. Renderings and floor plans are representative likenesses of our homes and may differ from the actual homes. We invite you to tour a Home Center near you and inspect the highest value in quality housing available or call (912) 225-6940 to speak with a Home Consultant. Copyright 2017, CMH. All rights reserved.

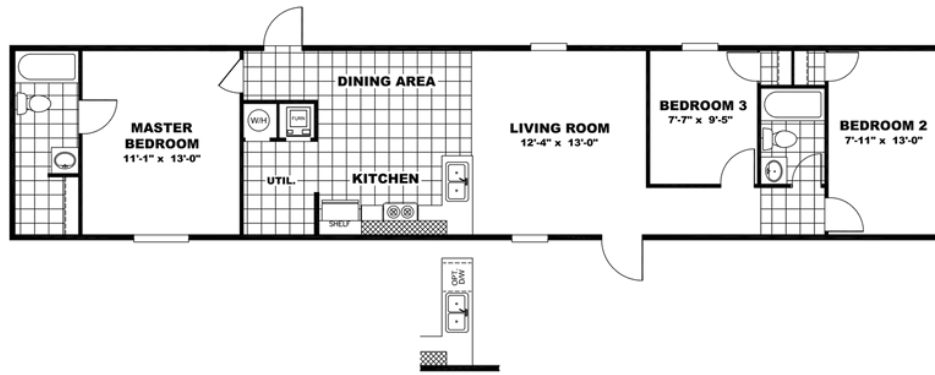
<https://www.claytonhomesofstatesboro.com>

**CLAYTON HOMES-
STATESBORO**

**12147 HWY 301 SOUTH
STATESBORO, GA 30458**

Monday - Thursday: 9am - 6pm
Friday: 9am - 6pm
Saturday: 9am - 5pm
Sunday: Closed

(912) 225-6940



OPT. DISHWASHER CAB.

42TRR14663AH19 Model number: 42TRR14663AH19

3 beds • 2 baths • 924 sq.ft. • 14' width • 66' depth

Our home building facilities invest in continuous product and process improvements. Plans, dimensions, features, materials, specifications and availability are subject to change without notice or obligation. Renderings and floor plans are representative likenesses of our homes and may differ from the actual homes. We invite you to tour a Home Center near you and inspect the highest value in quality housing available or call (912) 225-6940 to speak with a Home Consultant. Copyright 2017, CMH. All rights reserved.

<https://www.claytonhomesofstatesboro.com>

CLAYTON HOMES-STATESBORO

12147 HWY 301 SOUTH
STATESBORO, GA 30458

Monday - Thursday: 9am - 6pm
Friday: 9am - 6pm
Saturday: 9am - 5pm
Sunday: Closed

(912) 225-6940